

# MONTHLY MEMBERSHIP PROGRESS REPORT

LOCATION ILLINOIS

District 1 F

Results as of: 9/30/2022

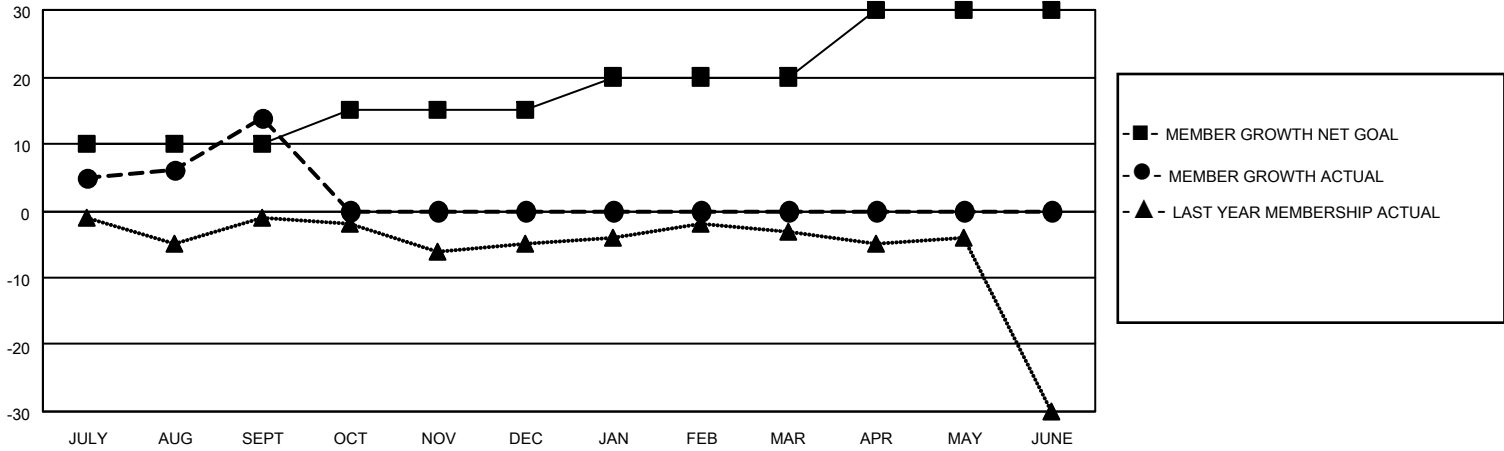
Clubs			
RESULTS FOR 2022-2023			
QUARTER	NEW CLUB GOAL	NEW CLUBS	DROPPED CLUBS
JULY/AUG/SEPT	0	0	0
OCT/NOV/DEC	1	0	0
JAN/FEB/MAR	1	0	0
APR/MAY/JUNE	0	0	0

Members			
RESULTS FOR 2022-2023			
QUARTER	MEMBER GROWTH NET GOAL	MEMBER GROWTH ACTUAL	DROPPED MEMBERS ACTUAL (including transfers)
JULY/AUG/SEPT	10	25	8
OCT/NOV/DEC	5	0	0
JAN/FEB/MAR	5	0	0
APR/MAY/JUNE	10	0	0

**GOALS AND ACTUAL NEW CLUBS CUMULATIVE**



**GOALS AND ACTUAL MEMBERS CUMULATIVE**



**DROPPED CLUBS: 0**

**11 CLUBS OF 31 ADDED 1 OR MORE NEW MEMBERS**

**GENDER DISTRIBUTION**

MALE	597 (70.82%)
FEMALE	245 (29.06%)
NON BINARY	0 (0.00%)
PREFER NOT TO ANSWER	1 (0.12%)

**DROPPED MEMBERS**

DECEASED	2
CLUB CANCELLED	0
OTHER	6
<b>TOTAL</b>	<b>8</b>

[CLICK HERE FOR CUMULATIVE MEMBERSHIP DATA](#)

TOTAL FAMILY UNIT MEMBERS	142
FAMILY MEMBERS PAYING HALF DUES	73